

EDUCATION

**Part of the “Public Services” Section of the Citizen Report Card
on Public Services, Good Governance and Development from 120 Niger Delta Communities**

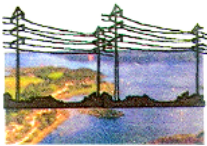
Niger Delta Professionals for Development (NIDPRODEV)
Effurun-Warri, Delta State, Nigeria
January 2011

Sponsored by the European Union

This project was funded by the **European Union (EU)**. Based on a partnership agreement between the **EU** and the **Federal Republic of Nigeria**, the implementation responsibilities of the **EU INSIDE** programme belong to the **National Planning Commission (NPC)**.



Niger Delta Professionals for Development (NIDPRODEV) is a Nigerian non-governmental organization that has worked in the Niger Delta for over 11 years on conflict management, community development, good governance, livelihood issues, and data collection and analysis. The **Leadership Center for Peace, Integrity and Transformation** is NIDPRODEV's parent organization.



NIDPRODEV

PTI Road, Plot 211, Fashion-N-Vogue Building
Effurun-Warri, Delta State
234 802-327-0549, 234 805-851-1591

METHODOLOGY

1. Between August and December 2010, NIDPRODEV programme officers fluent in local languages and culture visited each of the 120 communities, where they first spoke to community members in a Town Hall Meeting to describe the project and answer any questions. Community members were then asked to participate in Focus Group discussions. Those who participated were divided into four (4) different focus groups based on gender and age: Older Men, Younger Men, Older Women, and Younger Women. The age of forty years (40) was given as the distinguishing age between an older person and a younger person. Although NIDPRODEV staff did not verify participants' ages, it did ensure that people who presented themselves in focus groups who were noticeably above or below the appropriate age for that group were asked to join the appropriate Focus Group.
2. Within each Focus Group, participants were given each survey question and then instructed to discuss the question openly among the group members. When the group reached consensus on an answer, the NIDPRODEV programme officer repeated the answer and asked the group to confirm that the answer given is indeed the one they wished to have recorded. For certain questions that required individual participant answers, such as "Who in this room can read a book out loud to another person," participants were asked to raise their hands as the form of response.
3. In addition to specific answers to survey questions, qualitative responses from each Focus Group were recorded by the NIDPRODEV programme officers. Those narrative answers are provided in whole in the section of the Citizen Report Card of 120 Niger Delta Communities as "Community Member Comments." The comments reinforce the answers given in the survey responses, and in some cases, go further in providing a more contextual understanding of community life and struggles.
4. In questions relating to teachers, the responses of Younger Women were given more weight than the responses of other Focus Groups given that Younger Women have a more intimate understanding of the educational environment of their children. Questions relating to number of boys and girls enrolled in Primary School and the salary of teachers were asked to school administrators, not community members. In some cases, in which school was out of session during the visit by NIDPRODEV programme officers, the responses identified in our survey were left as "no response."

TABLE OF CONTENTS

| | <u>Page</u> |
|---|-------------|
| 1. Summary of Those Who Can Read a Book Out Loud to Another (by State and LGA) | 5 |
| 2. Summary of Communities That Have a Government-Run Primary School | 7 |
| 3. Percentage of Communities with Primary Schools that Have Libraries | 9 |
| 4. Percentage of Communities with Primary Schools that have Toilets | 10 |
| 5. Percentage of Communities with Primary Schools that have a Desk and Chair for Each Child | 11 |
| 6. Percentage of Communities in Which Parents Pay for Primary School Textbooks | 12 |
| 7. Summary of Community Members' Opinions About Teacher Quality | 13 |
| 8. Detailed Community Member Responses by State, LGA and Communities: | |
| a. Abia State | 18 |
| b. Bayelsa State | 28 |
| c. Delta State | 38 |
| d. Imo State | 53 |
| e. Ondo State | 63 |
| f. Rivers State | 73 |

1. FOCUS GROUP QUESTION: How many of you can read a book out loud to another person?

| FOCUS GROUP | Imo State LGAs (Ohaji Egbema and Oguta) | Abia State LGAs (Ukwa East and Ukwa West) | Ondo State LGAs (Ilaje and Ese Odo) | Bayelsa State LGAs (Kolokuma/Opokuma and Sagbama) | Delta State LGAs (Ughelli South, Uvwie, and Warri South) | Rivers State LGAs (Obio-Akpor and Ahoada East) |
|----------------------|--|--|--|---|---|---|
| Older Men | 70%, 64% | 86%, 71% | 38%, 47% | 82%, 68% | 62%, 34%, 82% | 51%, 68% |
| Younger Men | 72%, 29% | 67%, 68% | 53%, 57% | 78%, 64% | 69%, 49%, 84% | 52%, 64% |
| Younger Women | 58%, 77% | 77%, 74% | 48%, 54% | 65%, 40% | 77%, 24%, 71% | 82%, 40% |
| Older Women | 31%, 8% | 50%, 35% | 20%, 19% | 25%, 22% | 27%, 9%, 43% | 39%, 22% |

**MANY YOUNGER MEN CANNOT READ AS WELL AS
THE OLDER GENERATION OF MEN IN THEIR COMMUNITY***

In 44 communities or 37% of the 120 communities surveyed,
the ability of younger men to read well
appears to have fallen
below the ability of older men.

In 13 communities or 11% of the 120 communities surveyed,
the ability of younger women to read well
appears to have fallen below the ability of older women.

* See each State for identification of communities in which the reading ability of younger men and younger women appears to have fallen below the reading ability of the older generation.

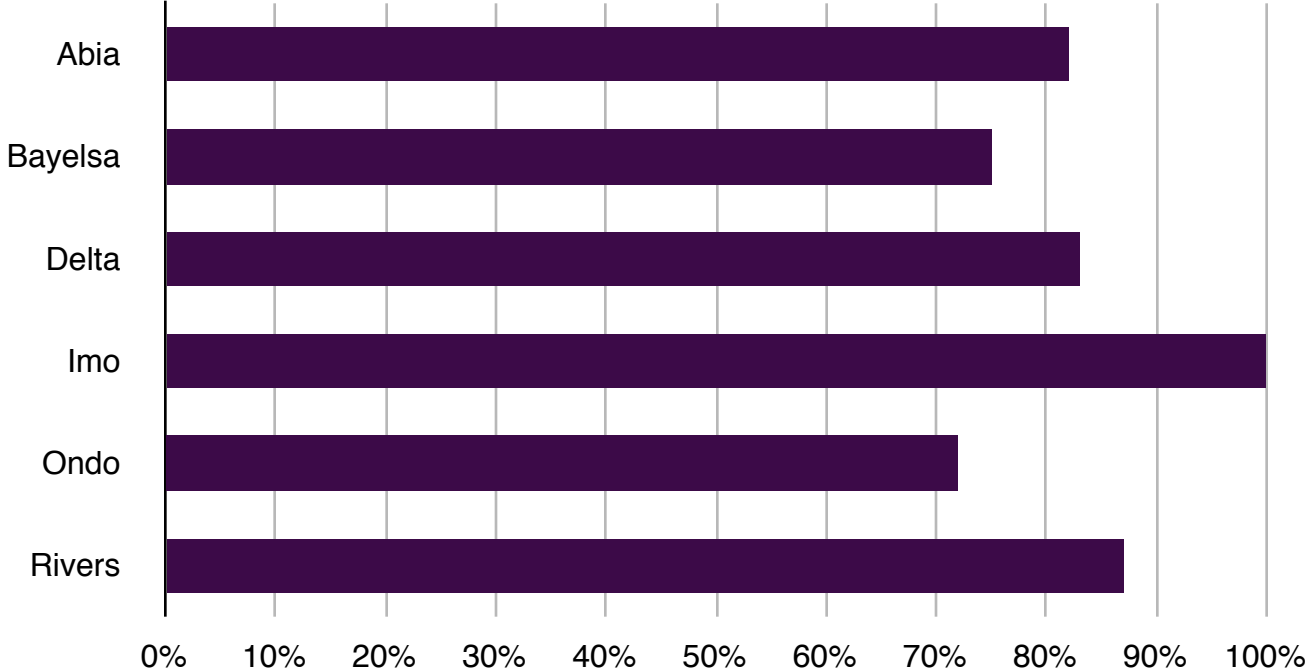
2. FOCUS GROUP QUESTION: Does your community have a primary school [in use]?

| LGA Name | IMO STATE | | ABIA STATE | | ONDO STATE | | BAYELSA STATE | | DELTA STATE | | RIVERS STATE | |
|----------------------|-----------|----|------------|----|------------|----|---------------|----|-------------|----|--------------|----|
| | yes | no | yes | no | yes | no | yes | no | yes | no | yes | no |
| Ohaji Egbema | 10 | 0 | | | | | | | | | | |
| Oguta | 10 | 0 | | | | | | | | | | |
| Ukwa East | | | 8 | 1 | | | | | | | | |
| Ukwa West | | | 6 | 2 | | | | | | | | |
| Ilaje | | | | | 6 | 3 | | | | | | |
| Ese Odo | | | | | 7 | 2 | | | | | | |
| Kolokuma/ Opokuma | | | | | | | 5 | 5 | | | | |
| Sagbama | | | | | | | 10 | 0 | | | | |
| Ughelli South | | | | | | | | | 10 | 0 | | |
| Uvwie | | | | | | | | | 9 | 1 | | |
| Warri South | | | | | | | | | 6 | 4 | | |
| Obio-Akpor | | | | | | | | | | | 4 | 2 |
| Ahoada East | | | | | | | | | | | 9 | 0 |
| TOTAL | 20 | 0 | 14 | 3 | 13 | 5 | 15 | 5 | 25 | 5 | 13 | 2 |

PERCENTAGE OF COMMUNITIES SURVEYED THAT HAVE A GOVERNMENT-RUN PRIMARY SCHOOL

A State-to-State Comparison

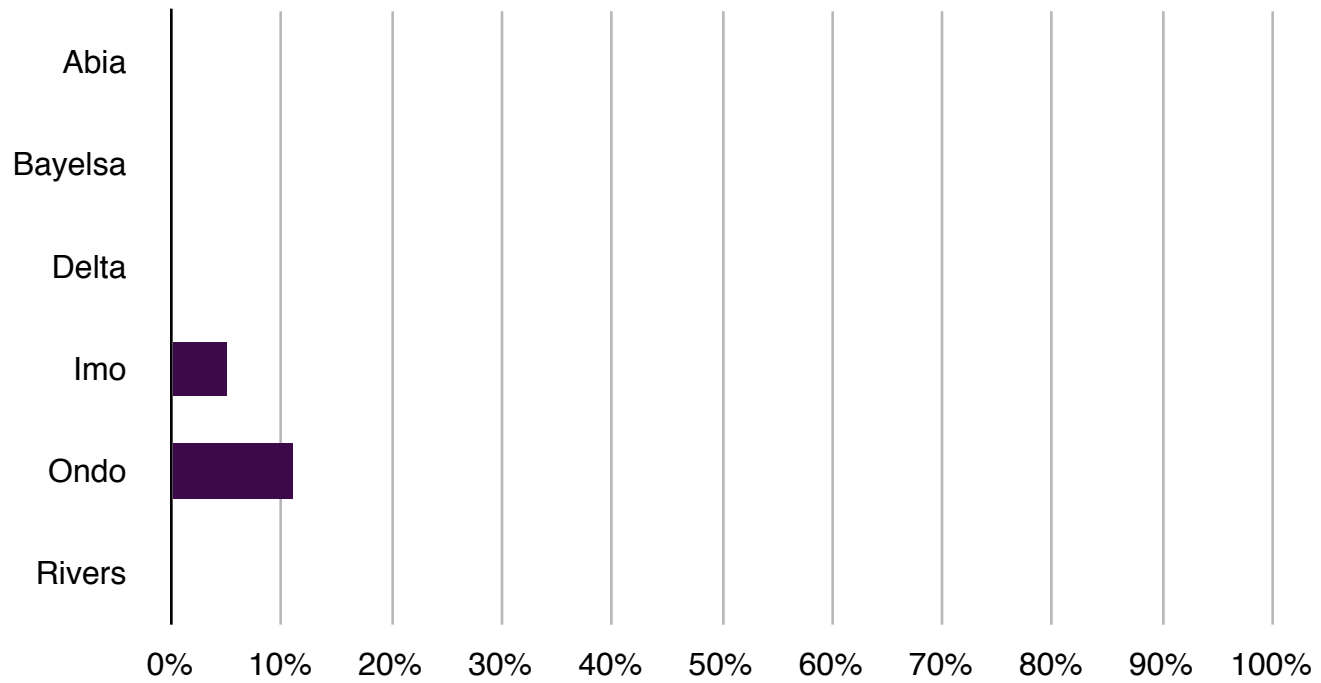
■ % of Communities Surveyed



PERCENTAGE OF COMMUNITIES SURVEYED IN WHICH PRIMARY SCHOOL HAS A LIBRARY

A State-to-State Comparison

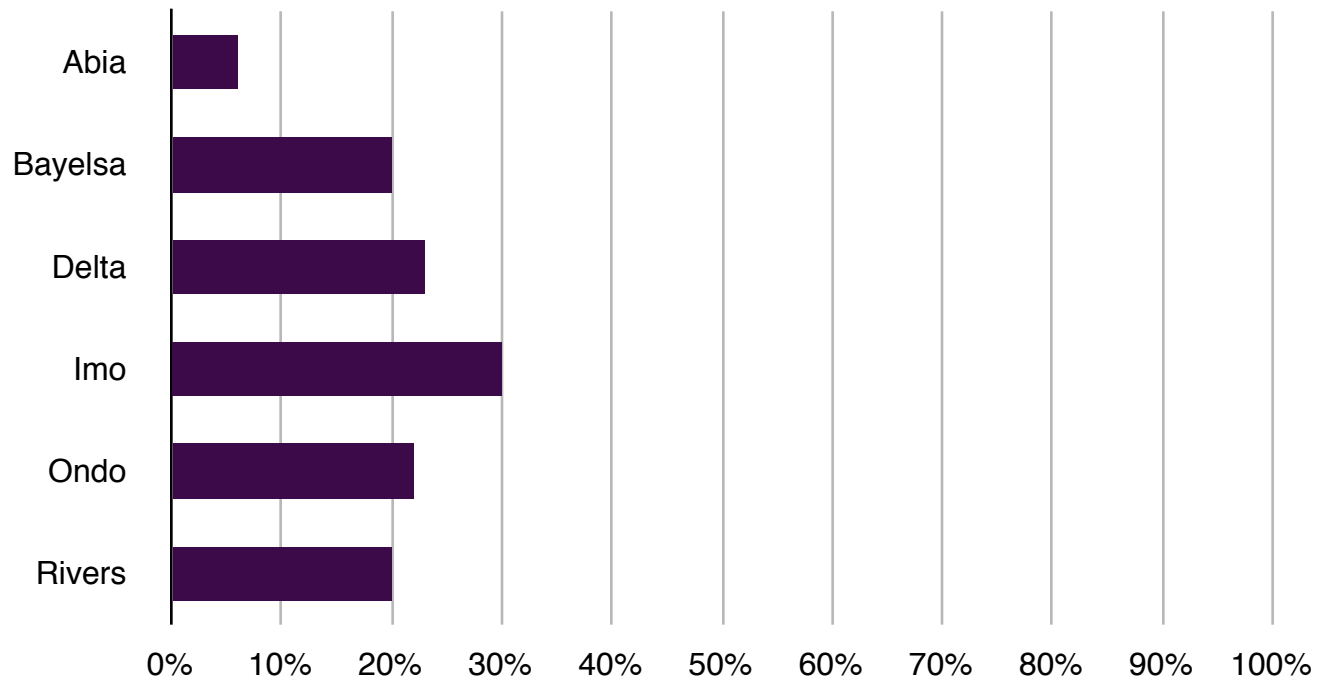
■ % of Communities Surveyed



PERCENTAGE OF COMMUNITIES SURVEYED IN WHICH PRIMARY SCHOOL HAS TOILET FOR CHILDREN

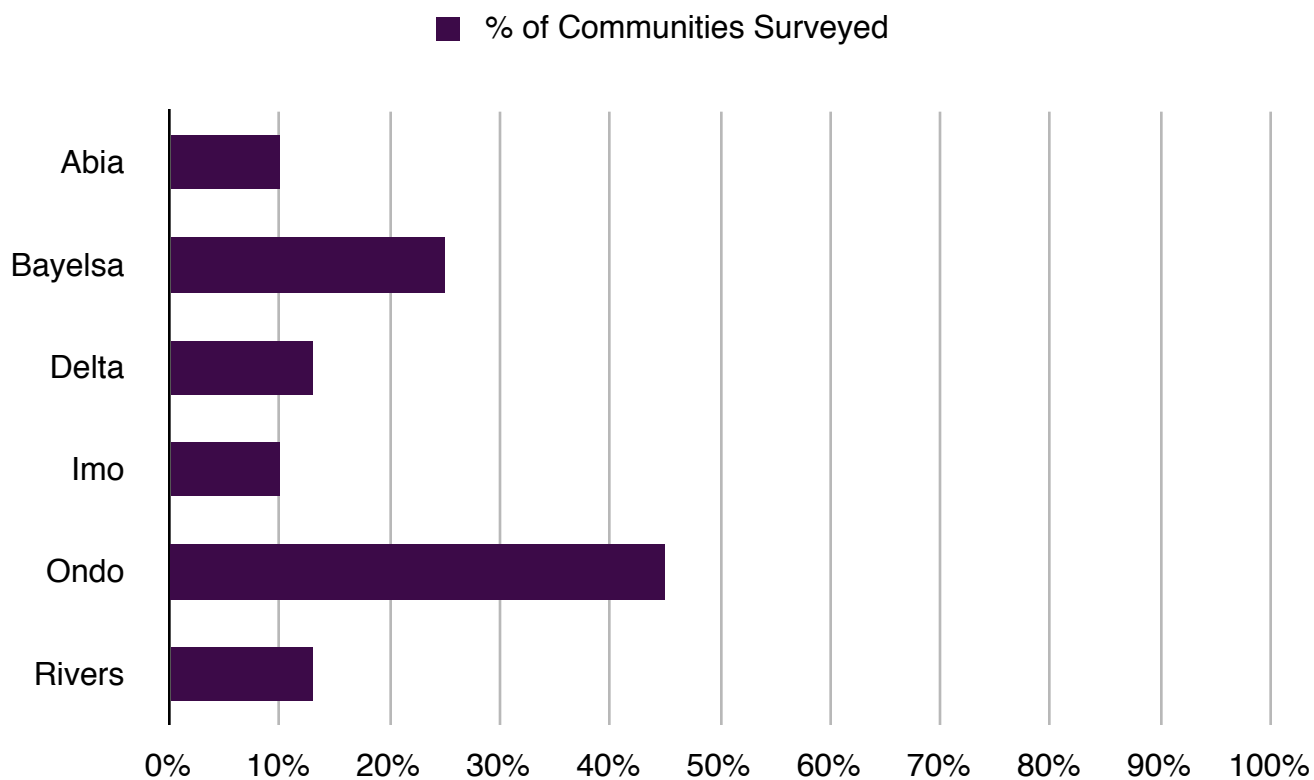
A State-to-State Comparison

■ % of Communities Surveyed



PERCENTAGE OF COMMUNITIES SURVEYED IN WHICH PRIMARY SCHOOL HAS A DESK AND CHAIR FOR EACH CHILD

A State-to-State Comparison



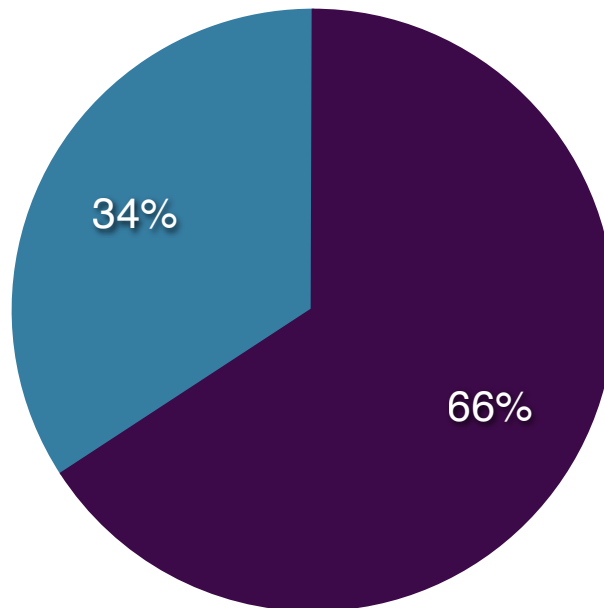
NOTE: All communities in Bayelsa State that had Primary School's with desks and chairs for each child were located in Sagbama LGA. No community's primary school in Kolokuma/Opokuma LGA had desks and chairs for each child.

4. FOCUS GROUP QUESTION: Do parents pay for the textbooks where their children attend Primary School?

In 79 of the 120 communities, the parents pay for the textbooks that their children use in Primary School.

In 41 of the 120 communities, the government provides free textbooks for Primary School children.

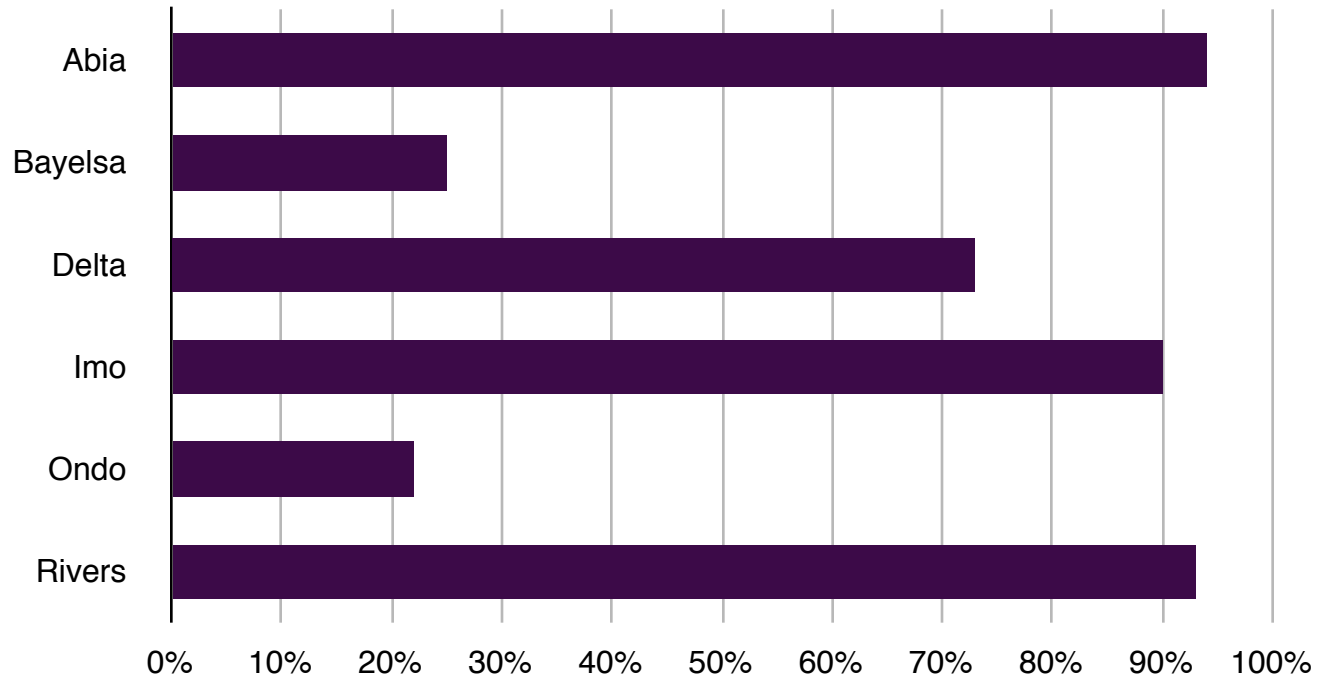
- parents pay for Primary School textbooks
- government provides free Primary School textbooks



PERCENTAGE OF COMMUNITIES SURVEYED IN WHICH PARENTS PAY FOR PRIMARY SCHOOL TEXTBOOKS

A State-to-State Comparison

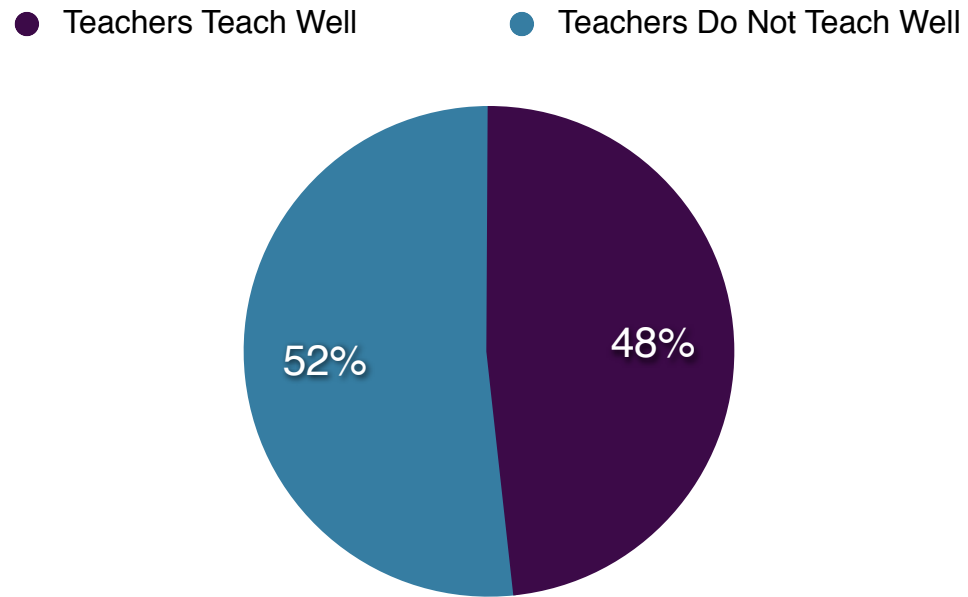
■ % of Communities Surveyed



FG QUESTION: Do Primary School teachers “dey try?” [do they teach well; in your opinion, are they qualified?]

In 58 of the 120 communities, respondents say that the Primary School teachers “dey try.”

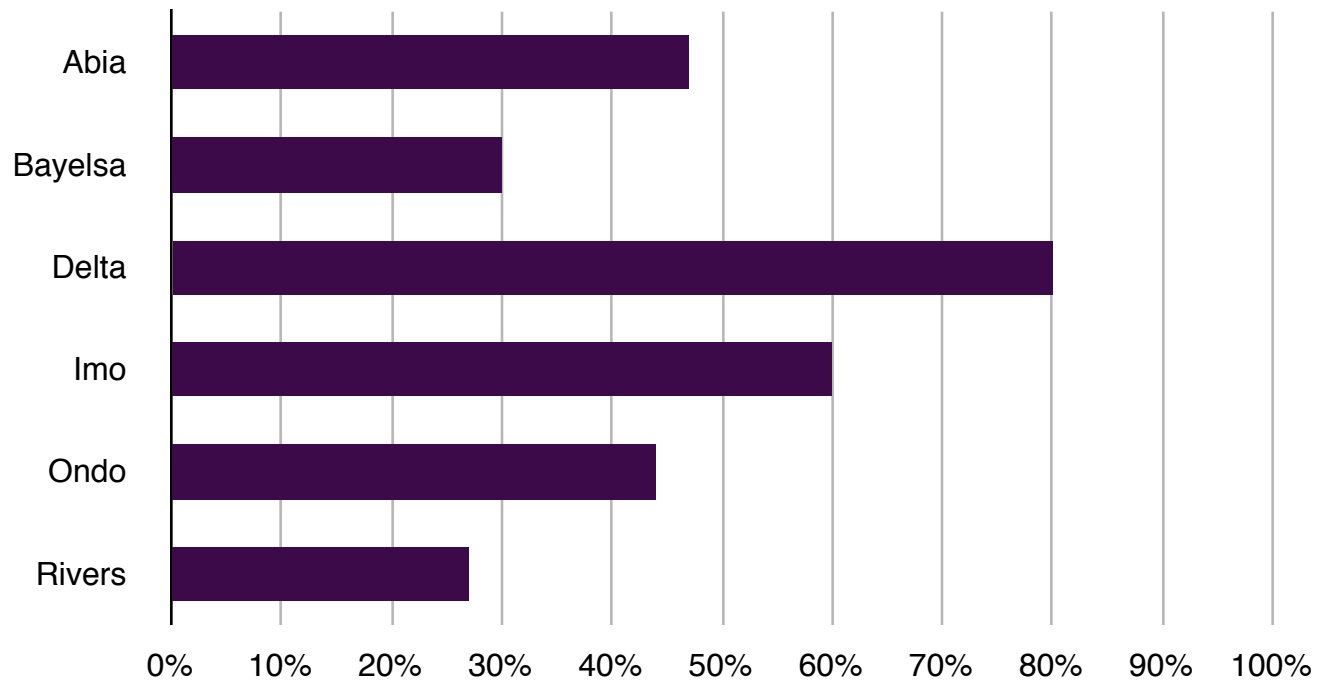
In 62 of the 120 communities, respondents say that the Primary School teachers “no dey try.”



PERCENTAGE OF COMMUNITIES SURVEYED IN WHICH YOUNG WOMEN FOCUS GROUPS SAY THAT TEACHERS “NO DEY TRY”

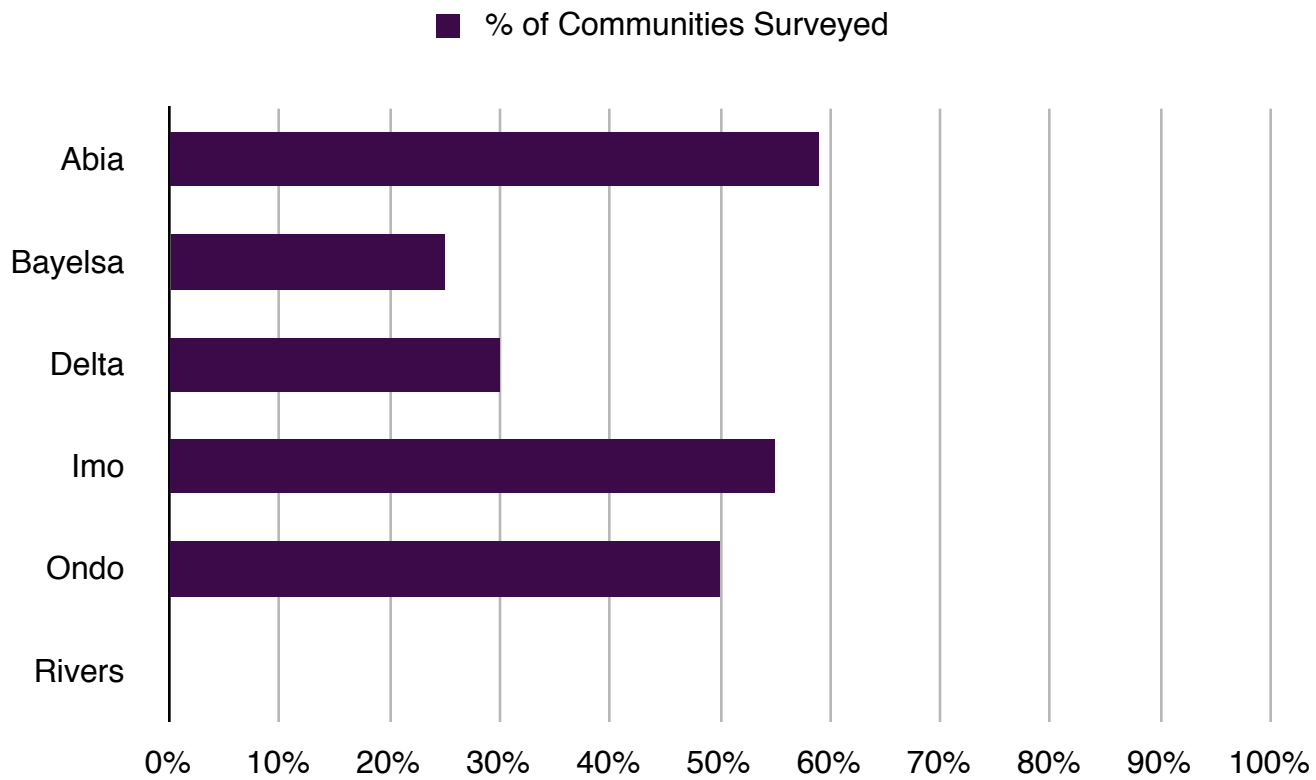
A State-to-State Comparison

■ % of Communities Surveyed



**PERCENTAGE OF COMMUNITIES SURVEYED IN WHICH
YOUNG WOMEN FOCUS GROUPS SAY THAT TEACHERS DO NOT TEACH REGULARLY
(Monday-Friday, mornings and afternoons)**

A State-to-State Comparison



EDUCATION

BY

STATE,

LOCAL GOVERNMENT AREA, and

COMMUNITY

ABIA STATE

Ukwa East LGA and Ukwa West LGA

COMMUNITIES IN WHICH THE READING ABILITY OF THE YOUNGER GENERATION APPEARS TO HAVE FALLEN BELOW THE READING ABILITY OF THE OLDER GENERATION*

Ukwa East LGA:

Younger Men's Reading Ability Appears to Have Fallen Below Older Men's Reading Ability in:

Akirika Nta Community

Obuozu (Ikwoorieator West) Community

Ohambele Community

Obohia Community

Ohuru Ndoki Community

Younger Women's Reading Ability Appears to Have Fallen Below Older Women's Reading Ability in:

Okotoko Community

Ukwa West LGA:

Younger Men's Reading Ability Appears to Have Fallen Below Older Men's Reading Ability in:

Umuorie Community

Umuokwor Asa Community

Umuiku Community

* Based on Responses of Individual Participants in Focus Groups.

1. Focus Group Question: How many of you [in this room] can read a book out loud to another person?

| STATE | LGA | COMMUNITY | OLDER MEN | YOUNGER MEN | YOUNGER WOMEN | OLDER WOMEN |
|-------|-----------|----------------------------|------------|-------------|---------------|-------------|
| Abia | Ukwa East | Akirika Nta | 71% | 41% | 46% | 21% |
| | | Obuozu (Ikwoorieator West) | 87% | 15% | 100% | 40% |
| | | Azumini | 88% | 94% | 56% | 29% |
| | | Obeaku | 85% | 100% | 100% | 60% |
| | | Ohambele | 100% | 60% | 86% | 50% |
| | | Obohia | 88% | 50% | 100% | 29% |
| | | Okotoko | 67% | 76% | 60% | 67% |
| | | Akwete | 100% | 100% | 92% | 94% |
| | | Ohuru Ndoki | 87% | 85% | 100% | 87% |
| | | Percentage of Total | 86% | 67% | 77% | 50% |
| Abia | Ukwa West | Owaza | 100% | 100% | 100% | 100% |
| | | Umudiobia | 50% | 58% | 100% | 47% |
| | | Obehie | 100% | 100% | 100% | 29% |
| | | Umuorie | 100% | 55% | 47% | 44% |

| STATE | LGA | COMMUNITY | OLDER MEN | YOUNGER MEN | YOUNGER WOMEN | OLDER WOMEN |
|-------|-----|----------------------------|------------|-------------|---------------|-------------|
| | | Umuokwor Asa | 30% | 29% | 100% | 25% |
| | | Ezendioma | 76% | 50% | 100% | 36% |
| | | Umuebulungwu | 50% | 91% | 38% | 10% |
| | | Umuiku | 88% | 48% | 79% | 53% |
| | | Percentage of Total | 71% | 68% | 74% | 35% |

2. Focus Group Question and School Administrator/Teacher Interview: Does your community have a primary school? If yes, how many students (boys/girls) and how many teachers?

| STATE | LGA | COMMUNITY | PRIMARY SCHOOL? | # OF STUDENTS | # OF BOYS | # OF GIRLS | # OF TEACHERS | STUDENT/TEACHER RATIO |
|-------------|------------------|----------------------------|-----------------|---------------|-----------|------------|---------------|-----------------------|
| Abia | Ukwa East | Akirika Nta | no | n/a | n/a | n/a | n/a | n/a |
| | | Obuozu (Ikwuorieator West) | yes | 195 | 95 | 100 | 15 | 13 to 1 |
| | | Azumini | yes | 155 | 73 | 82 | 20 | 8 to 1 |
| | | Obeaku | yes | 700 | 400 | 300 | 8 | 87 to 1 |
| | | Ohambele | yes | 310 | 150 | 160 | 23 | 14 to 1 |
| | | Obohia | yes | 270 | 120 | 150 | 18 | 15 to 1 |
| | | Okotoko | yes | 95 | 52 | 43 | 8 | 12 to 1 |
| | | Akwete | yes | 270 | 120 | 150 | 27 | 10 to 1 |
| | | Ohuru Ndoki | yes | 220 | 100 | 120 | 17 | 13 to 1 |
| | | | | | | | | |
| Abia | Ukwa West | Owaza | yes | 370 | 220 | 150 | 15 | 25 to 1 |
| | | Umudiobia | yes | 322 | 165 | 157 | 25 | 13 to 1 |

| STATE | LGA | COMMUNITY | PRIMARY SCHOOL? | # OF STUDENTS | # OF BOYS | # OF GIRLS | # OF TEACHERS | STUDENT/TEACHER RATIO |
|-------|-----|--------------|-----------------|---------------|-----------|------------|---------------|-----------------------|
| | | Obehie | yes | 542 | 259 | 283 | 32 | 17 to 1 |
| | | Umuorie | yes | 110 | 62 | 48 | 10 | 11 to 1 |
| | | Umuokwor Asa | no | 115 | 50 | 65 | 8 | 14 to 1 |
| | | Ezendioma | yes | 100 | 40 | 60 | 12 | 8 to 1 |
| | | Umuebulungwu | no | 190 | 90 | 100 | 10 | 19 to 1 |
| | | Umuiku | yes | 200 | 120 | 80 | 9 | 22 to 1 |

- 3. Focus Group Questions:**
- Do all the children in Primary School have a desk and chair?**
 - Are the textbooks in Primary School free to the students?**
 - Does the Primary School have a functioning library? Toilets for children?**
 - What is the monthly salary of Primary School teachers? Is it paid regularly?**

| STATE | LGA | COMMUNITY | DESK AND CHAIRS FOR EVERY CHILD? | DO PARENTS PAY FOR PS TEXT-BOOKS? | FUNCTION-ING LIBRARY? | TOILETS FOR PUPILS? | MONTHLY SALARY OF PS TEACHERS (in Naira) | ARE TEACHERS PAID REGULARLY ? |
|-------------|------------------|-----------------------------------|----------------------------------|-----------------------------------|-----------------------|---------------------|--|-------------------------------|
| Abia | Ukwa East | Akirika Nta (PS not in community) | no | no | no | no | don't know | don't know |
| | | Obuozu (Ikwoorieator West) | no | yes | no | no | 11,000 | yes |
| | | Azumini | no | yes | no | no | 23,392 | yes |
| | | Obeaku | no | yes | no | no | 12,000 | yes |
| | | Ohambele | no | yes | no | no | 13,000 | yes |
| | | Obohia | no | yes | no | no | 12,200 | yes |
| | | Okotoko | no | yes | no | no | 12,000 | yes |
| | | Akwete | yes | yes | no | no | 13,000 | yes |
| | | Ohuru Ndoki | no | yes | no | no | 13,000 | yes |

| STATE | LGA | COMMUNITY | DESK AND CHAIRS FOR EVERY CHILD? | DO PARENTS PAY FOR PS TEXT-BOOKS? | FUNCTION-ING LIBRARY? | TOILETS FOR PUPILS? | MONTHLY SALARY OF PS TEACHERS (in Naira) | ARE TEACHERS PAID REGULARLY ? |
|-------------|------------------|--------------|----------------------------------|-----------------------------------|-----------------------|---------------------|--|-------------------------------|
| | | | | | | | | |
| Abia | Ukwa West | Owaza | no | yes | no | no | 10,000 | no |
| | | Umudobia | no | yes | no | no | 9,240 | no |
| | | Obehie | no | yes | no | no | 6,653 | no |
| | | Umuorie | yes | yes | no | yes | 10,000 | no |
| | | Umuokwor Asa | no | yes | no | no | 13,000 | no |
| | | Ezendioma | no | yes | no | no | 10,500 | no |
| | | Umuebulungwu | no | yes | no | no | 10,000 | no |
| | | Umuiku | no | yes | no | no | 10,360 | yes |

5. Focus Group Question (Younger Women Focus Group): Do the teachers “dey try” or do well teaching? Do teachers teach regularly (Monday thru Friday, morning and afternoon)? Are there teachers quarters available for the teachers?

| STATE | LGA | COMMUNITY | Teachers Try? | Teach Regularly? | Teachers Quarters Available? |
|-------|-----------|----------------------------|---------------|------------------|------------------------------|
| Abia | Ukwa East | Akirika Nta | no | no | no |
| | | Obuozu (Ikwuorieator West) | no | no | yes |
| | | Azumini | yes | no | no |
| | | Obeaku | yes | no | yes |
| | | Ohambele | no | no | no |
| | | Obohia | no | no | no |
| | | Okotoko | yes | yes | no |
| | | Akwete | yes | yes | no |
| | | Ohuru Ndoki | no | no | no |
| | | | | | |
| Abia | Ukwa West | Owaza | no | no | no |
| | | Umudiobia | yes | yes | no |
| | | Obehie | yes | yes | no |

| STATE | LGA | COMMUNITY | Teachers Try? | Teach Regularly? | Teachers Quarters Available? |
|-------|-----|--------------|---------------|------------------|------------------------------|
| | | Umuorie | yes | yes | no |
| | | Umuokwor Asa | yes | yes | no |
| | | Ezendioma | no | no | no |
| | | Umuebulungwu | no | no | no |
| | | Umuiku | yes | yes | no |

BAYELSA STATE

Kolokuma/Opokuma LGA

and

Sagbama LGA

**COMMUNITIES IN WHICH THE READING ABILITY OF THE YOUNGER GENERATION
APPEARS TO HAVE FALLEN BELOW THE READING ABILITY OF THE OLDER GENERATION***

Kolokuma/Opokuma LGA

Younger Men's Reading Ability Appears to Have Fallen Below Older Men's Reading Ability in:

Sabagreia Community
Ayakoroama Community
Olobiri Community

Younger Women's Reading Ability Appears to Have Fallen Below Older Women's Reading Ability in:

Igbedi Community

Sagbama LGA

Younger Men's Reading Ability Appears to Have Fallen Below Older Men's Reading Ability in:

Odoni Community
Bulou-Orua Community
Ebedebiri Community

Younger Women's Reading Ability Appears to Have Fallen Below Older Women's Reading Ability in:

Toru-Ebeni Community
Adagbabiri Community

1. Focus Group Question: How many of you [in this room] can read a book out loud to another person?

| STATE | LGA | COMMUNITY | OLDER MEN | YOUNGER MEN | YOUNGER WOMEN | OLDER WOMEN |
|---------|----------------------|---------------------------|------------|-------------|---------------|-------------|
| Bayelsa | Kolokuma/ Opokuma | Igbedi | 100% | 100% | 14% | 18% |
| | | Okoloba | 100% | 100% | 60% | 50% |
| | | Sabagreia | 100% | 50% | 83% | 50% |
| | | Kaiama | 100% | 100% | 100% | 20% |
| | | Ayibabiri | 53% | 91% | 79% | 27% |
| | | Orubiri | 100% | 100% | 83% | 29% |
| | | Ayakoroama | 100% | 93% | 100% | 18% |
| | | Akaranbiri | 64% | 71% | 28% | 14% |
| | | Odi | 58% | 100% | 100% | 32% |
| | | Olobiri | 58% | 0% | 53% | 17% |
| | | Average Percentage | 82% | 78% | 65% | 25% |
| | | | | | | |
| Bayelsa | Sagbama | Toru-Ebeni | 29% | 50% | 0% | 30% |
| | | Trofani | 67% | 70% | 36% | 14% |
| | | Odoni | 91% | 55% | 33% | 11% |

| STATE | LGA | COMMUNITY | OLDER MEN | YOUNGER MEN | YOUNGER WOMEN | OLDER WOMEN |
|-------|-----|---------------------------|-----------|-------------|---------------|-------------|
| | | Agbere | 86% | 100% | 67% | 33% |
| | | Adagbabiri | 76% | 100% | 33% | 100% |
| | | Sagbama | 50% | 71% | 43% | 25% |
| | | Bulou-Orua | 91% | 70% | 36% | 29% |
| | | Ebedebiri | 73% | 27% | 50% | 13% |
| | | Tungbo-Ebe | 100% | 100% | 63% | 16% |
| | | Toru-Angiama | 24% | 25% | 20% | 6% |
| | | Average Percentage | 68% | 64% | 40% | 22% |

2. Focus Group Question and School Administrator/Teacher Interview: Does your community have a primary school? If yes, how many students (boys/girls) and how many teachers?

| STATE | LGA | COMMUNITY | PRIMARY SCHOOL? | # OF STUDENTS | # OF BOYS | # OF GIRLS | # OF TEACHERS | STUDENT/TEACHER RATIO |
|----------------|-----------------|------------|-----------------|------------------|------------------|------------------|------------------|-----------------------|
| Bayelsa | Kolokuma | Igbedi | yes | 7000 | 4000 | 3000 | 30 | 233 to 1 |
| | | Okoloba | yes | 340 | 140 | 200 | 28 | 12 to 1 |
| | | Sabagreia | yes | 1561 | 820 | 741 | 83 | 19 to 1 |
| | | Kaiama | yes | 3194 | 1556 | 1638 | 80 | a |
| | | Ayibabiri | no | n/a | n/a | n/a | n/a | n/a |
| | | Orubiri | no | n/a | n/a | n/a | n/a | n/a |
| | | Ayakoroama | no | n/a | n/a | n/a | n/a | n/a |
| | | Akaranbiri | no | n/a | n/a | n/a | n/a | n/a |
| | | Odi | yes | 2362 | 1143 | 1219 | 54 | 45 to 1 |
| | | Olobiri | yes | no re- sponse | no re- sponse | no re- sponse | no re- sponse | no re- sponse |
| | | | | | | | | |
| Bayelsa | Sagbama | Toru-Ebeni | yes | 155 | 75 | 80 | 15 | 10 to 1 |
| | | Trofani | yes | 2700 | 1300 | 1400 | 16 | 169 to 1 |
| | | Odoni | yes | 1188 | 732 | 456 | 15 | 79 to 1 |

| STATE | LGA | COMMUNITY | PRIMARY SCHOOL? | # OF STUDENTS | # OF BOYS | # OF GIRLS | # OF TEACHERS | STUDENT/TEACHER RATIO |
|-------|-----|--------------|-----------------|---------------|-----------|------------|---------------|-----------------------|
| | | Agbere | yes | 400 | 250 | 150 | 11 | 36 to 1 |
| | | Adagbabiri | yes | 561 | 226 | 335 | 33 | 17 to 1 |
| | | Sagbama | yes | 1100 | 500 | 600 | 67 | 16 to 1 |
| | | Bulou-Orua | yes | 550 | 290 | 260 | 37 | 15 to 1 |
| | | Ebedebiri | yes | 600 | 300 | 300 | 28 | 21 to 1 |
| | | Tungbo-Ebe | yes | 450 | 200 | 250 | 25 | 18 to 1 |
| | | Toru-Angiama | yes | 959 | 492 | 467 | 12 | 41 to 1 |

- 3. Focus Group Questions:** Do all the children in Primary School have a desk and chair?
 Are the textbooks in Primary School free to the students or do parents pay?
 Does the Primary School have a functioning library? Toilets for children?
 What is the monthly salary of Primary School teachers? Is it paid regularly?

| STATE | LGA | COMMUNITY | DESK AND CHAIRS FOR EVERY CHILD? | DO PARENTS PAY FOR PS TEXT-BOOKS? | FUNCTION-ING LIBRARY? | TOILETS FOR PUPILS? | MONTHLY SALARY OF PS TEACHERS (in Naira) | ARE TEACHERS PAID REGULARLY ? |
|----------------|-----------------|------------|----------------------------------|-----------------------------------|-----------------------|---------------------|--|-------------------------------|
| Bayelsa | Kolokuma | Igbedi | no | yes | no | no | 9,000 | yes |
| | | Okoloba | no | yes | no | no | 20,000 | yes |
| | | Sabagreia | no | no | no | no | 15,000 | yes |
| | | Kaiama | no | yes | no | yes | 34,000 | yes |
| | | Ayibabiri | no | yes | no | no | n/a | n/a |
| | | Orubiri | no | no | no | no | n/a | n/a |
| | | Ayakoroama | no | yes | no | no | n/a | n/a |
| | | Akaranbiri | no | yes | no | no | n/a | n/a |
| | | Odi | no | yes | no | yes | 17,000 | yes |
| | | Olobiri | no | no | no | no | no response | no response |
| | | | | | | | | |
| Bayelsa | Sagbama | Toru-Ebeni | no | yes | no | no | no idea | yes |

| STATE | LGA | COMMUNITY | DESK AND CHAIRS FOR EVERY CHILD? | DO PARENTS PAY FOR PS TEXT-BOOKS? | FUNCTION-ING LIBRARY? | TOILETS FOR PUPILS? | MONTHLY SALARY OF PS TEACHERS (in Naira) | ARE TEACHERS PAID REGULARLY ? |
|-------|-----|--------------|----------------------------------|-----------------------------------|-----------------------|---------------------|--|-------------------------------|
| | | Trofani | yes | no | no | no | 30,000 | yes |
| | | Odoni | yes | no | no | yes | 14,000 | no |
| | | Agbere | yes | yes | no | yes | no idea | yes |
| | | Adagbabiri | yes | yes | no | no | 15,000 | yes |
| | | Sagbama | yes | yes | no | no | 15,000 | yes |
| | | Bulou-Orua | no | yes | no | no | 24,000 | yes |
| | | Ebedebiri | no | yes | no | no | 13,000 | yes |
| | | Tungbo-Ebe | no | yes | no | no | 15,000 | yes |
| | | Toru-Angiama | no | yes | no | no | 21,000 | yes |

5. Focus Group Question (Younger Women Focus Group): Do the teachers “dey try” or do well teaching? Do teachers teach regularly (Monday thru Friday, morning and afternoon)? Are there teachers quarters available for the teachers?

| STATE | LGA | COMMUNITY | Teachers Try? | Teach Regularly? | Teachers Quarters Available? |
|----------------|-----------------|------------|---------------|------------------|------------------------------|
| Bayelsa | Kolokuma | Igbedi | yes | yes | no |
| | | Okoloba | yes | yes | no |
| | | Sabagreia | yes | yes | no |
| | | Kaiama | yes | yes | no |
| | | Ayibabiri | no | no | no |
| | | Orubiri | no | no | no |
| | | Ayakoroama | no | no | no |
| | | Akaranbiri | no | no | no |
| | | Odi | yes | yes | no |
| | | Olobiri | no | no | no |
| | | | | | |
| Bayelsa | Sagbama | Toru-Ebeni | yes | yes | yes |
| | | Trofani | no | yes | no |
| | | Odoni | yes | yes | no |

| STATE | LGA | COMMUNITY | Teachers Try? | Teach Regularly? | Teachers Quarters Available? |
|-------|-----|--------------|---------------|------------------|------------------------------|
| | | Agbere | yes | yes | no |
| | | Adagbabiri | yes | yes | no |
| | | Sagbama | yes | yes | no |
| | | Bulou-Orua | yes | yes | no |
| | | Ebedebiri | yes | yes | no |
| | | Tungbo-Ebe | yes | yes | no |
| | | Toru-Angiama | yes | yes | no |

DELTA STATE

Ughelli South LGA,

Uvwie LGA

and

Warri South LGA

COMMUNITIES IN WHICH THE READING ABILITY OF THE YOUNGER GENERATION APPEARS TO HAVE FALLEN BELOW THE READING ABILITY OF THE OLDER GENERATION*

Ughelli South LGA:

Younger Men's Reading Ability Appears to Have Fallen Below Older Men's Reading Ability in:

Olodiana Community
Arhagba Community
Usiefrun Community

Younger Women's Reading Ability Appears to Have Fallen Below Older Women's Reading Ability in:

Olodiana Community
Arhagba Community

Uvwie LGA:

Younger Men's Reading Ability Appears to Have Fallen Below Older Men's Reading Ability in:

Erovia Community
Ugboroke Community

Younger Women's Reading Ability Appears to Have Fallen Below Older Women's Reading Ability in:

Ugbomro Community

Warri South LGA:

Younger Men's Reading Ability Appears to Have Fallen Below Older Men's Reading Ability in:

Ijala Community
Usele Community
Ajiga Community
Orugbo Community

Younger Women's Reading Ability Appears to Have Fallen Below Older Women's Reading Ability in:

Ijala Community

* Based on Participant's Responses in Focus Groups.

1. Focus Group Question: How many of you [in this room] can read a book out loud to another person?

| STATE | LGA | COMMUNITY | OLDER MEN | YOUNGER MEN | YOUNGER WOMEN | OLDER WOMEN |
|-------|---------------|---------------------------|------------|-------------|---------------|-------------|
| Delta | Ughelli South | Ekakpamre | 83% | 100% | 100% | 0% |
| | | Otu- Jeremi | 86% | 100% | 29% | 27% |
| | | Iwhrekan | 67% | 73% | 17% | 0% |
| | | Okpavuerhe | 21% | 21% | 14% | 5% |
| | | Olodiamama | 12% | 10% | 4% | 8% |
| | | Arhagba | 60% | 57% | 6% | 12% |
| | | Usiefrun | 53% | 41% | 67% | 8% |
| | | Ewu | 35% | 76% | 63% | 9% |
| | | Oginibo | 29% | 55% | 16% | 8% |
| | | Okwagbe Waterside | 27% | 71% | 31% | 15% |
| | | Average Percentage | 36% | 50% | 27% | 9% |
| Delta | Uvwie | Jakpa | 38% | 67% | 67% | 9% |
| | | Ugbomro | 44% | 100% | 11% | 50% |
| | | Ugbolokposo | 67% | 67% | 100% | 42% |

| STATE | LGA | COMMUNITY | OLDER MEN | YOUNGER MEN | YOUNGER WOMEN | OLDER WOMEN |
|--------------|--------------------|----------------------------|------------|-------------|---------------|-------------|
| | | Ohorhe 1 | 29% | 100% | 57% | 15% |
| | | Ugborikoko | 47% | 74% | 67% | 50% |
| | | Erovie | 73% | 10% | 75% | 0% |
| | | Ugboroke | 86% | 26% | 31% | 6% |
| | | Ebrumede | 71% | 100% | 100% | 75% |
| | | Alaka | 71% | 81% | 90% | 42% |
| | | Urhumarho/Okotogbo | 73% | 88% | 86% | 22% |
| | | Percentage of Total | 62% | 69% | 77% | 30% |
| | | | | | | |
| Delta | Warri South | Aja-Etan | 100% | 100% | 25% | 64% |
| | | Ijala | 100% | 84% | 83% | 100% |
| | | Usele | 91% | 76% | 77% | 40% |
| | | Ekurede Itsekiri | 79% | 100% | 57% | 43% |
| | | Ugbori | 93% | 100% | 100% | 77% |
| | | Ajigba | 100% | 62% | 100% | 79% |
| | | Ugbuwangue | 71% | 100% | 79% | 14% |
| | | Obodo | 33% | 82% | 14% | 11% |

| STATE | LGA | COMMUNITY | OLDER MEN | YOUNGER MEN | YOUNGER WOMEN | OLDER WOMEN |
|-------|-----|---------------------------|------------|-------------|---------------|-------------|
| | | Orugbo | 100% | 64% | 63% | 18% |
| | | Omadino | 60% | 87% | 75% | 9% |
| | | Average Percentage | 82% | 84% | 71% | 43% |

2. Focus Group Question and School Administrator/Teacher Interview: Does your community have a primary school? If yes, how many students (boys/girls) and how many teachers?

| STATE | LGA | COMMUNITY | PRIMARY SCHOOL? | # OF STUDENTS | # OF BOYS | # OF GIRLS | # OF TEACHERS | STUDENT/TEACHER RATIO |
|--------------|----------------------|-------------------|-----------------|---------------|-----------|------------|---------------|-----------------------|
| Delta | Ughelli South | Ekakpamre | yes | 335 | 235 | 100 | 32 | 10 to 1 |
| | | Otu- Jeremi | yes | 1209 | 601 | 608 | 38 | 39 to 1 |
| | | Iwhrekan | yes | 350 | 160 | 190 | 31 | 12 to 1 |
| | | Okpavuerhe | yes | 205 | 107 | 98 | 17 | 12 to 1 |
| | | Olodiana | yes | 250 | 100 | 150 | 14 | 18 to 1 |
| | | Arhagba | yes | 120 | 54 | 66 | 9 | 13 to 1 |
| | | Usiefrun | yes | 465 | 220 | 245 | 40 | 12 to 1 |
| | | Ewu | yes | 670 | 270 | 400 | 40 | 17 to 1 |
| | | Oginibo | yes | 450 | 250 | 200 | 39 | 12 to 1 |
| | | Okwagbe Waterside | yes | 1678 | 881 | 797 | 43 | 39 to 1 |
| | | | | | | | | |
| Delta | Uvwie | Jakpa | no | n/a | n/a | n/a | n/a | n/a |
| | | Ugbomro | yes | 865 | 415 | 450 | 24 | 36 to 1 |

| STATE | LGA | COMMUNITY | PRIMARY SCHOOL? | # OF STUDENTS | # OF BOYS | # OF GIRLS | # OF TEACHERS | STUDENT/TEACHER RATIO |
|--------------|--------------------|------------------------|-----------------|---------------|-------------|-------------|---------------|-----------------------|
| | | Ugbolokposo | yes | 150 | 69 | 81 | 10 | 15 to 1 |
| | | Ohorhe 1 | yes | 69 | 34 | 35 | 7 | 10 to 1 |
| | | Ugborikoko | yes | 160 | 100 | 60 | 15 | 11 to 1 |
| | | Erovie | yes | 2105 | 537 | 1568 | no response | no response |
| | | Ugboroke | yes | 237 | 119 | 118 | 37 | 6 to 1 |
| | | Ebrumede | yes | 154 | 77 | 77 | 24 | 6 to 1 |
| | | Alaka | yes | no response | no response | no response | no response | no response |
| | | Urhumarho/ Okotogbo | yes | 1273 | 628 | 645 | 145 | 9 to 1 |
| | | | | | | | | |
| Delta | Warri South | Aja-Etan | no | n/a | n/a | n/a | n/a | n/a |
| | | Ijala | no | n/a | n/a | n/a | n/a | n/a |
| | | Usele | no | n/a | n/a | n/a | n/a | n/a |
| | | Ekurede Itsekiri | yes | 570 | 290 | 280 | 38 | 15 to 1 |
| | | Ugbori | yes | 570 | 290 | 280 | 38 | 15 to 1 |

| STATE | LGA | COMMUNITY | PRIMARY SCHOOL? | # OF STUDENTS | # OF BOYS | # OF GIRLS | # OF TEACHERS | STUDENT/TEACHER RATIO |
|-------|-----|------------|-----------------|---------------|------------------|------------------|---------------|-----------------------|
| | | Ajigba | no | n/a | n/a | n/a | n/a | n/a |
| | | Ugbuwangue | yes | 329 | 155 | 174 | 23 | 14 to 1 |
| | | Obodo | yes | no response | no re- sponse | no re- sponse | no response | no re- sponse |
| | | Orugbo | yes | 240 | 123 | 117 | 10 | 24 to 1 |
| | | Omadino | yes | 265 | 130 | 135 | 20 | 13 to 1 |

- 3. Focus Group Questions:**
- Do all the children in Primary School have a desk and chair?**
 - Are the textbooks in Primary School free to the students or do parents pay?**
 - Does the Primary School have a functioning library? Toilets for children?**
 - What is the monthly salary of Primary School teachers? Is it paid regularly?**

| STATE | LGA | COMMUNITY | DESK AND CHAIRS? | DO PARENTS PAY FOR PS TEXT-BOOKS? | FUNCTION-ING LIBRARY? | TOILETS FOR PUPILS? | MONTHLY SALARY OF PS TEACHERS (in Naira) | ARE TEACHERS PAID REGULARLY ? |
|-------|---------------|-------------------|------------------|-----------------------------------|-----------------------|---------------------|--|-------------------------------|
| Delta | Ughelli South | Ekakpamre | no | yes | no | no | 15,250 | yes |
| | | Otu- Jeremi | no | yes | no | yes | no response | no |
| | | Iwhrekan | no | yes | no | no | 18,500 | yes |
| | | Okpavuerhe | no | yes | no | yes | 12,800 | no |
| | | Olodiamma | no | yes | no | no | 15,200 | yes |
| | | Arhagba | no | yes | no | no | 11,520 | yes |
| | | Usiefrun | no | yes | no | yes | no response | yes |
| | | Ewu | no | yes | no | no | 15,000 | yes |
| | | Oginibo | no | yes | no | yes | 14,000 | yes |
| | | Okwagbe Waterside | no | yes | no | no | 13,300 | yes |
| | | | | | | | | |

| STATE | LGA | COMMUNITY | DESK AND CHAIRS? | DO PARENTS PAY FOR PS TEXT-BOOKS? | FUNCTION-ING LIBRARY? | TOILETS FOR PUPILS? | MONTHLY SALARY OF PS TEACHERS (in Naira) | ARE TEACHERS PAID REGULARLY ? |
|--------------|--------------------|------------------------|------------------|-----------------------------------|-----------------------|---------------------|--|-------------------------------|
| Delta | Uvwie | Jakpa | n/a | n/a | n/a | n/a | n/a | n/a |
| | | Ugbomro | no | yes | no | yes | 11,520 | yes |
| | | Ugbolokposo | no | yes | no | no | no response | yes |
| | | Ohorhe 1 | no | yes | no | no | 11,500 | yes |
| | | Ugborikoko | yes | yes | no | no | no response | yes |
| | | Erovie | no | yes | no | no | 24,640 | no |
| | | Ugboroke | no | yes | no | no | no response | no |
| | | Ebrumede | no | yes | no | yes | 13,856 | yes |
| | | Alaka | no | yes | no | no | no response | no response |
| | | Urhumarho/ Okotogbo | no | no | no | no | 14,500 | no |
| | | | | | | | | |
| Delta | Warri South | Aja-Etan | no | no | n/a | n/a | n/a | n/a |
| | | Ijala | no | yes | n/a | n/a | n/a | n/a |
| | | Usele | no | yes | n/a | n/a | n/a | n/a |

| STATE | LGA | COMMUNITY | DESK AND CHAIRS? | DO PARENTS PAY FOR PS TEXT-BOOKS? | FUNCTION-ING LIBRARY? | TOILETS FOR PUPILS? | MONTHLY SALARY OF PS TEACHERS (in Naira) | ARE TEACHERS PAID REGULARLY ? |
|-------|-----|------------------|------------------|-----------------------------------|-----------------------|---------------------|--|-------------------------------|
| | | Ekurede Itsekiri | yes | yes | no | no | 15,338 | yes |
| | | Ugbori | yes | yes | no | no | 15,338 | yes |
| | | Ajigba | no | yes | n/a | n/a | n/a | n/a |
| | | Ugbuwangue | no | yes | no | yes | 18,500 | yes |
| | | Obodo | no | yes | no | no | no response | no response |
| | | Orugbo | no | yes | no | no | no response | yes |
| | | Omadino | yes | yes | no | no | 15,000 | yes |

5. Focus Group Question (Younger Women Focus Group): Do the teachers “dey try” or do well teaching? Do teachers teach regularly (Monday thru Friday, morning and afternoon)? Are there teachers quarters available for the teachers?

| STATE | LGA | COMMUNITY | Teachers Try? | Teach Regularly? | Teachers Quarters Available? |
|--------------|----------------------|-------------------|---------------|------------------|------------------------------|
| Delta | Ughelli South | Ekakpamre | no | yes | yes |
| | | Otu- Jeremi | no | no | yes |
| | | Iwhrekan | yes | yes | no |
| | | Okpavuerhe | no | yes | no |
| | | Olodiana | yes | yes | yes |
| | | Arhagba | yes | yes | no |
| | | Usiefrun | yes | yes | no |
| | | Ewu | no | no | no |
| | | Oginibo | yes | yes | no |
| | | Okwagbe Waterside | no | yes | no |
| | | | | | |
| Delta | Uvwie | Jakpa | no | no | no |
| | | Ugbomro | no | yes | no |

| STATE | LGA | COMMUNITY | Teachers Try? | Teach Regularly? | Teachers Quarters Available? |
|--------------|--------------------|------------------------|---------------|------------------|------------------------------|
| | | Ugbolokposo | yes | yes | no |
| | | Ohorhe 1 | no | yes | no |
| | | Ugborikoko | yes | yes | no |
| | | Erovie | yes | yes | no |
| | | Ugboroke | yes | yes | no |
| | | Ebrumede | yes | yes | no |
| | | Alaka | yes | yes | no |
| | | Urhumarho/ Okotogbo | yes | yes | no |
| | | | | | |
| Delta | Warri South | Aja-Etan | no | no | no |
| | | Ijala | no | no | no |
| | | Usele | no | no | no |
| | | Ekurede Itsekiri | yes | yes | no |
| | | Ugbori | yes | yes | no |
| | | Ajigba | no | no | no |
| | | Ugbuwangue | yes | yes | no |

| STATE | LGA | COMMUNITY | Teachers Try? | Teach Regularly? | Teachers Quarters Available? |
|-------|-----|-----------|---------------|------------------|------------------------------|
| | | Obodo | no | no | no |
| | | Orugbo | yes | no | no |
| | | Omadino | no | no | yes |

IMO STATE

Oguta LGA

and

Ohaji Egbema LGA

**COMMUNITIES IN WHICH THE READING ABILITY OF THE YOUNGER GENERATION
APPEARS TO HAVE FALLEN BELOW THE READING ABILITY OF THE OLDER GENERATION***

Oguta LGA:

Younger Men's Reading Ability Appears to Have Fallen Below Older Men's Reading Ability in:

Mgbele Community
Umunwama-Izombe Community
Aborshi-Izombe Community
Egbuoma Community
Obudi Agwa Community

Younger Women's Reading Ability Appears to Have Fallen Below Older Women's Reading Ability in:

Aborshi-Izombe Community
Obudi Agwa Community

Ohaji Egbema LGA:

Younger Men's Reading Ability Appears to Have Fallen Below Older Men's Reading Ability in:

Etekwuru Community
Ihie Community
Mmahu Community
Opuoma Community

* Based on Participant's Responses in Focus Groups.

1. Focus Group Question: How many of you [in this room] can read a book out loud to another person?

| STATE | LGA | COMMUNITY | OLDER MEN | YOUNGER MEN | YOUNGER WOMEN | OLDER WOMEN | | |
|-------|--------------|--------------------|-----------|---------------------------|---------------|-------------|------------|------------|
| Imo | Oguta | Ndi-Uloukwu Izombe | 56% | 100% | 88% | 24% | | |
| | | Mgbele | 53% | 52% | 62% | 33% | | |
| | | Ndionyemaobi | 40% | 100% | 75% | 33% | | |
| | | Egwe | 76% | 100% | 100% | 62% | | |
| | | Ejemekwuru | 66% | 100% | 100% | 71% | | |
| | | Umunwama-Izombe | 83% | 25% | 100% | 88% | | |
| | | Eziorsu | 72% | 100% | 100% | 43% | | |
| | | Aborshi-Izombe | 63% | 30% | 38% | 67% | | |
| | | Egbuoma | 56% | 51% | 100% | 25% | | |
| | | Obudi Agwa | 77% | 53% | 57% | 61% | | |
| | | | | Average Percentage | 64% | 69% | 83% | 48% |
| | | | | | | | | |
| Imo | Ohaji-Egbema | Umuapu | 21% | 100% | 53% | 23% | | |
| | | Obitti | 53% | 100% | 70% | 15% | | |
| | | Umuagwo | 100% | 100% | 100% | 56% | | |

| STATE | LGA | COMMUNITY | OLDER MEN | YOUNGER MEN | YOUNGER WOMEN | OLDER WOMEN |
|-------|-----|---------------------------|------------|-------------|---------------|-------------|
| | | Etekwuru | 85% | 69% | 47% | 45% |
| | | Ihie | 77% | 68% | 41% | 13% |
| | | Obosima | 65% | 100% | 75% | 55% |
| | | Mmahu | 90% | 50% | 100% | 25% |
| | | Opuoma | 63% | 29% | 15% | 15% |
| | | Obiakpu | 100% | 100% | 58% | 49% |
| | | Obokofia | 74% | 100% | 75% | 50% |
| | | Average Percentage | 70% | 72% | 58% | 35% |

2. Focus Group Question and School Administrator/Teacher Interview: Does your community have a primary school? If yes, how many students (boys/girls) and how many teachers?

| STATE | LGA | COMMUNITY | PRIMARY SCHOOL? | # OF STUDENTS | # OF BOYS | # OF GIRLS | # OF TEACHERS | STUDENT/TEACHER RATIO |
|------------|--------------------------|-----------------------|-----------------|---------------|-----------|------------|---------------|-----------------------|
| Imo | Oguta | Ndi-Uloukwu Izombe | yes | 156 | 84 | 72 | 14 | 11 to 1 |
| | | Mgbele | yes | 75 | 30 | 45 | 4 | 19 to 1 |
| | | Ndionyemaobi | yes | 150 | 70 | 80 | 6 | 25 o 1 |
| | | Egwe | yes | 400 | 150 | 250 | 12 | 33 to 1 |
| | | Ejemekwuru | yes | 500 | 220 | 280 | 8 | 63 to 1 |
| | | Umunwama- Izombe | yes | 560 | 200 | 360 | 12 | 47 to 1 |
| | | Eziorsu | yes | 380 | 180 | 200 | 5 | 76 to 1 |
| | | Aborshi-Izombe | yes | 380 | 130 | 250 | 14 | 27 to 1 |
| | | Egbuoma | yes | 165 | 75 | 90 | 7 | 24 to 1 |
| | | Obudi Agwa | yes | 240 | 110 | 130 | 7 | 34 to 1 |
| | | | | | | | | |
| Imo | Ohaji- Egbema | Umuapu | yes | 200 | 50 | 150 | 6 | 33 to 1 |
| | | Obitti | yes | 330 | 200 | 130 | 5 | 66 to 1 |

| STATE | LGA | COMMUNITY | PRIMARY SCHOOL? | # OF STUDENTS | # OF BOYS | # OF GIRLS | # OF TEACHERS | STUDENT/TEACHER RATIO |
|-------|-----|-----------|-----------------|---------------|-----------|------------|---------------|-----------------------|
| | | Umuagwo | yes | 520 | 270 | 250 | 5 | 104 to 1 |
| | | Etekwuru | yes | 460 | 320 | 140 | 5 | 92 to 1 |
| | | Ihie | yes | 300 | 110 | 190 | 5 | 60 to 1 |
| | | Obosima | yes | 674 | 262 | 412 | 13 | 52 to 1 |
| | | Mmahu | yes | 130 | 60 | 70 | 7 | 19 to 1 |
| | | Opuoma | yes | 108 | 60 | 48 | 3 | 60 to 1 |
| | | Obiakpu | yes | 330 | 180 | 150 | 4 | 83 to 1 |
| | | Obokofia | yes | 750 | 450 | 300 | 9 | 83 to 1 |

- 3. Focus Group Questions:**
- Do all the children in Primary School have a desk and chair?**
 - Are the textbooks in Primary School free to the students or do parents pay?**
 - Does the Primary School have a functioning library? Toilets for children?**
 - What is the monthly salary of Primary School teachers? Is it paid regularly?**

| STATE | LGA | COMMUNITY | DESK AND CHAIRS? | DO PARENTS PAY FOR PS TEXT-BOOKS? | FUNCTION-ING LIBRARY? | TOILETS FOR PUPILS? | MONTHLY SALARY OF PS TEACHERS (in Naira) | ARE TEACHERS PAID REGULARLY ? |
|-------|-------|--------------------|------------------|-----------------------------------|-----------------------|---------------------|--|-------------------------------|
| Imo | Oguta | Ndi-Uloukwu Izombe | no | yes | no | no | 16,000 | yes |
| | | Mgbele | no | yes | no | yes | 15,000 | yes |
| | | Ndionyemaobi | no | yes | no | no | 16,000 | yes |
| | | Egwe | no | yes | no | no | 16,000 | yes |
| | | Ejemekwuru | no | yes | yes | yes | 16,000 | yes |
| | | Umunwama-Izombe | no | yes | no | no | 16,000 | yes |
| | | Eziorsu | no | yes | no | no | 11,000 | yes |
| | | Aborshi-Izombe | no | yes | no | no | 16,000 | yes |
| | | Egbuoma | no | yes | no | no | 16,000 | yes |
| | | Obudi Agwa | no | yes | no | no | 16,000 | yes |
| | | | | | | | | |

| STATE | LGA | COMMUNITY | DESK AND CHAIRS? | DO PARENTS PAY FOR PS TEXT-BOOKS? | FUNCTION-ING LIBRARY? | TOILETS FOR PUPILS? | MONTHLY SALARY OF PS TEACHERS (in Naira) | ARE TEACHERS PAID REGULARLY ? |
|-------|---------------|-----------|------------------|-----------------------------------|-----------------------|---------------------|--|-------------------------------|
| Imo | Ohaji-Egbe ma | Umuapu | no | yes | no | no | 11,000 | yes |
| | | Obitti | no | yes | no | no | 25,000 | yes |
| | | Umuagwo | no | yes | no | yes | 15,000 | yes |
| | | Etekwuru | yes | yes | no | no | 25,000 | no |
| | | Ihie | no | yes | no | yes | 11,000 | yes |
| | | Obosima | no | yes | no | yes | 25,000 | yes |
| | | Mmahu | no | yes | no | no | 15,000 | no |
| | | Opuoma | no | yes | no | no | 25,730 | yes |
| | | Obiakpu | yes | yes | no | yes | 20,000 | yes |
| | | Obokofia | no | yes | no | no | 25,000 | yes |

5. Focus Group Question (Younger Women Focus Group): Do the teachers “dey try” or do well teaching? Do teachers teach regularly (Monday thru Friday, morning and afternoon)? Are there teachers quarters available for the teachers?

| STATE | LGA | COMMUNITY | Teachers Try? | Teach Regularly? | Teachers Quarters Available? |
|------------|---------------------|-----------------------|---------------|------------------|------------------------------|
| Imo | Oguta | Ndi-Uloukwu Izombe | yes | yes | no |
| | | Mgbele | no | no | no |
| | | Ndionyemaobi | no | no | no |
| | | Egwe | yes | yes | no |
| | | Ejemekwuru | no | yes | no |
| | | Umunwama- Izombe | yes | yes | no |
| | | Eziorsu | no | no | no |
| | | Aborshi-Izombe | no | no | no |
| | | Egbuoma | yes | yes | no |
| | | Obudi Agwa | yes | yes | no |
| | | | | no | |
| Imo | Ohaji-Egbema | Umuapu | no | no | no |
| | | Obitti | no | no | no |

| STATE | LGA | COMMUNITY | Teachers Try? | Teach Regularly? | Teachers Quarters Available? |
|-------|-----|-----------|---------------|------------------|------------------------------|
| | | Umuagwo | yes | yes | no |
| | | Etekwuru | no | no | no |
| | | Ihie | no | no | no |
| | | Obosima | yes | yes | no |
| | | Mmahu | no | no | no |
| | | Opuoma | yes | yes | no |
| | | Obiakpu | no | no | no |
| | | Obokofia | yes | yes | no |

ONDO STATE

Ese Odo LGA

and

Ilaje LGA

COMMUNITIES IN WHICH THE READING ABILITY OF THE YOUNGER GENERATION APPEARS TO HAVE FALLEN BELOW THE READING ABILITY OF THE OLDER GENERATION*

Ese Odo LGA:

Younger Men's Reading Ability Appears to Have Fallen Below Older Men's Reading Ability in:

Osari Community
Ukpe Community
Arogbo Community
Akpata Community

Ilaje LGA:

Younger Men's Reading Ability Appears to Have Fallen Below Older Men's Reading Ability in:

Mese Community
Gbagira Community
Rewoye Community

Younger Women's Reading Ability Appears to Have Fallen Below Older Women's Reading Ability in:

Aiyetoro Community

* Based on Participant's Responses in Focus Groups.

1. Focus Group Question: How many of you [in this room] can read a book out loud to another person?

| STATE | LGA | COMMUNITY | OLDER MEN | YOUNGER MEN | YOUNGER WOMEN | OLDER WOMEN |
|-------|---------|---------------------------|------------|-------------|---------------|-------------|
| Ondo | Ese Odo | Osari | 70% | 0% | 33% | 0% |
| | | Isreal Kiri | 8% | 71% | 17% | 0% |
| | | Biagbini | 44% | 71% | 100% | 11% |
| | | Opuba | 41% | 91% | 59% | 10% |
| | | Ukpe | 48% | 33% | 14% | 11% |
| | | Arogbo | 100% | 52% | 93% | 86% |
| | | Akpata | 32% | 29% | 17% | 5% |
| | | Igbotu | 42% | 59% | 69% | 8% |
| | | Kiribo | 47% | 94% | 84% | 27% |
| | | Average Percentage | 47% | 57% | 54% | 19% |
| | | | | | | |
| Ondo | Ilaje | Anehin | 13% | 67% | 57% | 7% |
| | | Aiyetoro | 74% | 79% | 50% | 57% |
| | | Ode-Mahin | 54% | 67% | 80% | 37% |
| | | Mese | 44% | 43% | 43% | 10% |

| STATE | LGA | COMMUNITY | OLDER MEN | YOUNGER MEN | YOUNGER WOMEN | OLDER WOMEN |
|-------|-----|---------------------------|------------|-------------|---------------|-------------|
| | | Ilowo | 22% | 38% | 41% | 12% |
| | | Ojumole | 31% | 57% | 34% | 13% |
| | | Gbagira | 44% | 38% | 36% | 29% |
| | | Rewoye | 50% | 17% | 48% | 12% |
| | | Awoye | 15% | 43% | 90% | 14% |
| | | Average Percentage | 38% | 53% | 48% | 20% |

2. Focus Group Question and School Administrator/Teacher Interview: Does your community have a primary school? If yes, how many students (boys/girls) and how many teachers?

| STATE | LGA | COMMUNITY | PRIMARY SCHOOL? | # OF STUDENTS | # OF BOYS | # OF GIRLS | # OF TEACHERS | STUDENT/TEACHER RATIO |
|-------------|----------------|-------------|-----------------|---------------|------------------|------------------|------------------|-----------------------|
| Ondo | Ese Odo | Osari | no | n/a | n/a | n/a | n/a | n/a |
| | | Isreal Kiri | no | n/a | n/a | n/a | n/a | n/a |
| | | Biagbini | yes | 640 | 520 | 120 | 4 | 160 to 1 |
| | | Opuba | yes | no response | no re- sponse | no re- sponse | no re- sponse | no response |
| | | Ukpe | yes | 446 | 260 | 186 | 3 | 149 to 1 |
| | | Arogbo | yes | 358 | 161 | 197 | 5 | 72 to 1 |
| | | Akpata | yes | no response | no re- sponse | no re- sponse | no re- sponse | no response |
| | | Igbotu | yes | no response | no re- sponse | no re- sponse | no re- sponse | no response |
| | | Kiribo | yes | 650 | 259 | 391 | 10 | 65 to 1 |
| | | | | | | | | |
| Ondo | Ilaje | Anehin | no | n/a | n/a | n/a | n/a | n/a |
| | | Aiyetoro | yes | no idea | no idea | no idea | no idea | no idea |
| | | Ode-Mahin | yes | no idea | no idea | no idea | no idea | no idea |

| STATE | LGA | COMMUNITY | PRIMARY SCHOOL? | # OF STUDENTS | # OF BOYS | # OF GIRLS | # OF TEACHERS | STUDENT/TEACHER RATIO |
|-------|-----|-----------|-----------------|---------------|-----------|------------|---------------|-----------------------|
| | | Mese | no | n/a | n/a | n/a | n/a | n/a |
| | | Ilowo | yes | 365 | 200 | 165 | 5 | 73 to 1 |
| | | Ojumole | yes | 60 | 31 | 29 | 3 | 20 to 1 |
| | | Gbagira | no | n/a | n/a | n/a | n/a | n/a |
| | | Rewoye | yes | no idea | no idea | no idea | 11 | no idea |
| | | Awoye | yes | no idea | no idea | no idea | no idea | no idea |

- 3. Focus Group Questions:**
- Do all the children in Primary School have a desk and chair?**
 - Are the textbooks in Primary School free to the students or do parents pay?**
 - Does the Primary School have a functioning library? Toilets for children?**
 - What is the monthly salary of Primary School teachers? Is it paid regularly?**

| STATE | LGA | COMMUNITY | DESK AND CHAIRS? | DO PARENTS PAY FOR PS TEXT-BOOKS? | FUNCTION-ING LIBRARY? | TOILETS FOR PUPILS? | MONTHLY SALARY OF PS TEACHERS (in Naira) | ARE TEACHERS PAID REGULARLY ? |
|-------------|----------------|-------------|------------------|-----------------------------------|-----------------------|---------------------|--|-------------------------------|
| Ondo | Ese Odo | Osari | no | no | no | no | n/a | n/a |
| | | Isreal Kiri | no | no | no | no | n/a | n/a |
| | | Biagbini | yes | yes | no | no | 10,000 | yes |
| | | Opuba | no | yes | no | no | no response | no response |
| | | Ukpe | yes | yes | no | no | 24,000 | yes |
| | | Arogbo | no | yes | no | no | 24,718 | yes |
| | | Akpata | no | yes | no | no | no response | no response |
| | | Igbotu | no | yes | no | no | no response | no response |
| | | Kiribo | yes | yes | no | no | 24,518 | yes |
| | | | | | | | | |
| Ondo | Ilaje | Anehin | no | no | no | no | n/a | n/a |
| | | Aiyetoro | yes | yes | no | no | no idea | no idea |

| STATE | LGA | COMMUNITY | DESK AND CHAIRS? | DO PARENTS PAY FOR PS TEXT-BOOKS? | FUNCTION-ING LIBRARY? | TOILETS FOR PUPILS? | MONTHLY SALARY OF PS TEACHERS (in Naira) | ARE TEACHERS PAID REGULARLY ? |
|-------|-----|-----------|------------------|-----------------------------------|-----------------------|---------------------|--|-------------------------------|
| | | Ode-Mahin | yes | yes | yes | yes | no idea | no idea |
| | | Mese | no | no | no | no | n/a | n/a |
| | | Ilowo | yes | yes | no | yes | 25,318 | yes |
| | | Ojumole | yes | yes | no | no | 28,318 | yes |
| | | Gbagira | no | no | no | no | n/a | n/a |
| | | Rewoye | yes | yes | yes | yes | 16,000 | yes |
| | | Awoye | yes | yes | no | yes | no idea | no idea |

5. Focus Group Question (Younger Women Focus Group): Do the teachers “dey try” or do well teaching? Do teachers teach regularly (Monday thru Friday, morning and afternoon)? Are there teachers quarters available for the teachers?

| STATE | LGA | COMMUNITY | Teachers Try? | Teach Regularly? | Teachers Quarters Available? |
|-------------|----------------|-------------|---------------|------------------|------------------------------|
| Ondo | Ese Odo | Osari | no | no | no |
| | | Isreal Kiri | no | no | no |
| | | Biagbini | yes | yes | no |
| | | Opuba | no | yes | no |
| | | Ukpe | yes | yes | no |
| | | Arogbo | yes | yes | no |
| | | Akpata | yes | yes | no |
| | | Igbotu | yes | yes | no |
| | | Kiribo | yes | yes | no |
| | | | | | |
| Ondo | Ilaje | Anehin | no | no | no |
| | | Aiyetoro | yes | no | no |
| | | Ode-Mahin | yes | yes | no |
| | | Mese | no | no | no |

| STATE | LGA | COMMUNITY | Teachers Try? | Teach Regularly? | Teachers Quarters Available? |
|-------|-----|-----------|---------------|------------------|------------------------------|
| | | Ilowo | yes | yes | yes |
| | | Ojumole | no | no | yes |
| | | Gbagira | no | no | no |
| | | Rewoye | yes | yes | yes |
| | | Awoye | no | no | yes |

RIVERS STATE

Ahoda East LGA

and

Obio-Akpor LGA

**COMMUNITIES IN WHICH THE READING ABILITY OF THE YOUNGER GENERATION
APPEARS TO HAVE FALLEN BELOW THE READING ABILITY OF THE OLDER GENERATION***

AHOADA EAST LGA:

Younger Men's Reading Ability Appears to Have Fallen Below Older Men's Reading Ability in:

Odiabidi Community
Ihuaje Community
Udebu Community

Younger Women's Reading Ability Appears to Have Fallen Below Older Women's Reading Ability in:

Ikata Community
Ihuaje Community

OBIO-AKPOR LGA:

Younger Men's Reading Ability Appears to Have Fallen Below Older Men's Reading Ability in:

Elikpokwuodu Community
Choba Community

1. Focus Group Question: How many of you [in this room] can read a book out loud to another person?

| STATE | LGA | COMMUNITY | OLDER MEN | YOUNGER MEN | YOUNGER WOMEN | OLDER WOMEN |
|--------|-------------|----------------------|-----------|---------------------------|---------------|-------------|
| Rivers | Ahoada East | Ihuowo | 38% | 43% | 21% | 12% |
| | | Ikata | 50% | 100% | 7% | 8% |
| | | Okporowo | 21% | 65% | 93% | 5% |
| | | Odiabidi | 48% | 43% | 50% | 3% |
| | | Ula-Ehuda | 50% | 100% | 100% | 14% |
| | | Ihuaje | 70% | 64% | 0% | 0% |
| | | Udebu | 25% | 17% | 14% | 8% |
| | | Ogbo | 45% | 100% | 48% | 5% |
| | | Edeoha | 44% | 58% | 36% | 7% |
| | | | | Average Percentage | 45% | 70% |
| Rivers | Obio-Akpor | Elikpokwuodu | 60% | 36% | 100% | 30% |
| | | Rumuodomaya | 93% | 100% | 100% | 100% |
| | | Orokwuruola-Nu-Orofu | 69% | 87% | 100% | 71% |
| | | Choba | 56% | 55% | 100% | 7% |

| STATE | LGA | COMMUNITY | OLDER MEN | YOUNGER MEN | YOUNGER WOMEN | OLDER WOMEN |
|-------|-----|---------------------------|------------|-------------|---------------|-------------|
| | | Woji | 100% | 100% | no YW FG | 100% |
| | | Eliozu | 60% | 69% | 80% | no OW FG |
| | | Average Percentage | 75% | 70% | 96% | 53% |

2. Focus Group Question and School Administrator/Teacher Interview: Does your community have a primary school? If yes, how many students (boys/girls) and how many teachers?

| STATE | LGA | COMMUNITY | PRIMARY SCHOOL? | # OF STUDENTS | # OF BOYS | # OF GIRLS | # OF TEACHERS | STUDENT/TEACHER RATIO |
|---------------|--------------------|----------------------|-----------------|---------------|-----------|------------|---------------|-----------------------|
| Rivers | Ahoada East | Ihuowo | yes | 250 | 150 | 100 | 14 | 18 to 1 |
| | | Ikata | yes | 700 | 400 | 300 | 7 | 100 to 1 |
| | | Okporowo | yes | 190 | 120 | 70 | 5 | 38 to 1 |
| | | Odiabidi | yes | 355 | 153 | 202 | 9 | 39 to 1 |
| | | Ula-Ehuda | yes | 190 | 120 | 70 | 12 | 16 to 1 |
| | | Ihuaje | yes | 219 | 109 | 110 | 10 | 22 to 1 |
| | | Udebu | yes | 140 | 80 | 60 | 12 | 12 to 1 |
| | | Ogbo | yes | 461 | 260 | 201 | 14 | 33 to 1 |
| | | Edeoha | yes | 667 | 395 | 272 | 5 | 133 to 1 |
| | | | | | | | | |
| Rivers | Obio-Akpor | Elikpokwuodu | yes | 1,064 | 200 | 864 | 42 | 25 to 1 |
| | | Rumuodomaya | yes | 1,005 | 405 | 600 | 32 | 31 to 1 |
| | | Orokwuruola-Nu-Orofu | yes | 850 | 350 | 500 | 35 | 24 to 1 |

| STATE | LGA | COMMUNITY | PRIMARY SCHOOL? | # OF STUDENTS | # OF BOYS | # OF GIRLS | # OF TEACHERS | STUDENT/TEACHER RATIO |
|-------|-----|-----------|-----------------|---------------|-----------|------------|---------------|-----------------------|
| | | Choba | yes | 625 | 350 | 275 | 10 | 63 to 1 |
| | | Woji | no | n/a | n/a | n/a | n/a | n/a |
| | | Eliozu | yes | 1,450 | 650 | 800 | 8 | 181 to 1 |

- 3. Focus Group Questions:**
- Do all the children in Primary School have a desk and chair?**
 - Are the textbooks in Primary School free to the students or do parents pay?**
 - Does the Primary School have a functioning library? Toilets for children?**
 - What is the monthly salary of Primary School teachers? Is it paid regularly?**

| STATE | LGA | COMMUNITY | DESK AND CHAIRS? | DO PARENTS PAY FOR PS TEXT-BOOKS? | FUNCTION-ING LIBRARY? | TOILETS FOR PUPILS? | MONTHLY SALARY OF PS TEACHERS (in Naira) | ARE TEACHERS PAID REGULARLY ? |
|---------------|--------------------|--------------|------------------|-----------------------------------|-----------------------|---------------------|--|-------------------------------|
| Rivers | Ahoada East | Ihuowo | no | yes | no | no | 17,000 | yes |
| | | Ikata | no | yes | no | no | 20,000 | yes |
| | | Okporowo | no | yes | no | no | 7,500 | yes |
| | | Odiabidi | no | yes | no | no | 8,000 | yes |
| | | Ula-Ehuda | yes | yes | no | yes | 18,000 | yes |
| | | Ihuaje | no | yes | no | no | 92,000 | yes |
| | | Udebu | no | yes | no | no | don't know | yes |
| | | Ogbo | no | yes | no | no | 15,000 | yes |
| | | Edeoha | no | no | no | no | 15,000 | yes |
| | | | | | | | | |
| Rivers | Obio-Akpor | Elikpokwuodu | no | yes | no | no | 14,000 | yes |

| STATE | LGA | COMMUNITY | DESK AND CHAIRS? | DO PARENTS PAY FOR PS TEXT-BOOKS? | FUNCTION-ING LIBRARY? | TOILETS FOR PUPILS? | MONTHLY SALARY OF PS TEACHERS (in Naira) | ARE TEACHERS PAID REGULARLY ? |
|-------|-----|----------------------|------------------|-----------------------------------|-----------------------|---------------------|--|-------------------------------|
| | | Rumuodomaya | no | yes | no | no | 32,000 | yes |
| | | Orokwuruola-Nu-Orofu | no | yes | no | yes | no idea | yes |
| | | Choba | no | yes | no | no | 14,000 | yes |
| | | Woji | no | yes | no | no | n/a | n/a |
| | | Eliozu | yes | yes | no | yes | 37,000 | yes |

5. Focus Group Question (Younger Women Focus Group): Do the teachers “dey try” or do well teaching? Do teachers teach regularly (Monday thru Friday, morning and afternoon)? Are there teachers quarters available for the teachers?

| STATE | LGA | COMMUNITY | Teachers Try? | Teach Regularly? | Teachers Quarters Available? |
|---------------|--------------------|----------------------|---------------|------------------|------------------------------|
| Rivers | Ahoada East | Ihuowo | yes | yes | no |
| | | Ikata | no | yes | no |
| | | Okporowo | yes | yes | no |
| | | Odiabidi | yes | yes | no |
| | | Ula-Ehuda | yes | yes | no |
| | | Ihuaje | yes | yes | no |
| | | Udebu | yes | yes | no |
| | | Ogbo | yes | yes | no |
| | | Edeoha | yes | yes | no |
| | | | | | |
| Rivers | Obio-Akpor | Elikpokwuodu | no | yes | no |
| | | Rumuodomaya | yes | yes | no |
| | | Orokwuruola-Nu-Orofu | no | yes | no |

| STATE | LGA | COMMUNITY | Teachers Try? | Teach Regularly? | Teachers Quarters Available? |
|-------|-----|-----------|---------------|------------------|------------------------------|
| | | Choba | yes | yes | no |
| | | Woji | no | no | no |
| | | Eliozu | yes | yes | no |

